

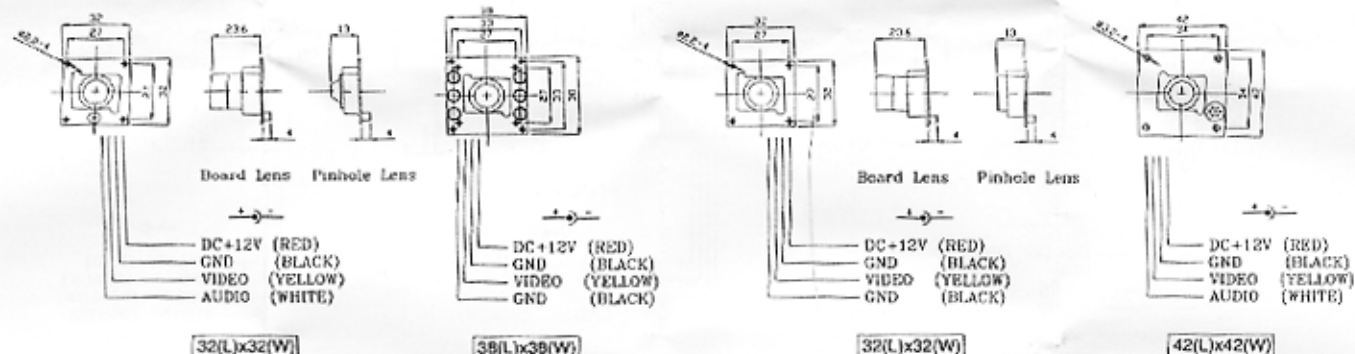
B/W BOARD CAMERA SPECIFICATION

Pick-up Element	1/3" Samsung B/W CCD image sensor		1/3" Sony B/W CCD image sensor			
Number of Pixel	510(H)x492(V)<EIA> / 500(H)x582(V)<CCIR>		512(H) x 492(V)<EIA> / 512(H)x582(V)<CCIR>			
Resolution	380 TV lines		400 TV lines			
Min. Illumination	0.5Lux / F2.0	0Lux@F2.0 in 4 meters (0.5Lux@F2.0 over 4 meters)	0.1Lux / F2.0			
S/N Ratio	More than 48dB (AGC off)		More than 48dB			
Electronic Shutter	1/60 (1/50) to 1/100,000 sec.		1/60 (1/50) to 1/100,000 sec.			
Load Impedance	75		75			
Standard Board Lens	f3.6mm / F2.0		f3.6mm / F2.0			
Power Source	DC12V \pm 10%		DC12V \pm 10%			
Lens Angle	92°		92°			
Microphone	Yes/No	Yes	No	No	Yes	
Current Consumption	120mA		180mA		120mA	
Dimension (mm)	32(L) x 32(W)	42(L) x 42(W)	38(L) x 38(W)	32(L) x 32(W)	42(L) x 42(W)	
Weight	15g	21g	20g	15g		

Standard Lens for B/W Board Camera:

Board Lens: f3.6mm/F2.0

Pinhole Lens: f5.5mm/F3.5



CAUTION:

Ensure Red Power Cable is connected with regulated DC+12V power source.

The Board Camera will be permanently damaged if it is operated at incorrect voltage levels.