

VTD-TND4RFA3

4 MegaPixel Advanced A.I. Indoor / Outdoor Fixed IP Vandal Dome Camera



VITEKCCTV.COM
(888) VITEK-70



KEY FEATURES

- 1/3" 4.0 Megapixel CMOS Image Sensor
- Up to 30fps @ 4 MegaPixel (2592 × 1520)
- Available with 3.6 or 2.8mm Fixed Lens Configurations:
VTD-TND4RFA3 (Ivory w/ 3.6mm),
VTD-TND4RFA3-2 (Ivory w/ 2.8mm),
VTD-TND4RFA3B (Charcoal w/ 3.6mm),
VTD-TND4RFA3B-2 (Charcoal w/ 2.8mm)
- Supports Still Image Recording Function
- 1 Matrix IR (up to 100' IR Range)
- True Wide Dynamic Range
- True Mechanical Day/Night function by ICR
- 3D-DNR (Digital Noise Reduction)
- Gen. III Advanced Analytics: Abnormal Video, Face Detection, Regional Intrusion Detection, Regional Entrance / Exiting Detection, Line Crossing, Target Counting Detection
- 1 Channel Audio In + Built in Mic*
- 1 Channel Alarm In + Out
- Smart H.265 / H.265+ / H.265 / Smart H.264 / H.264+ / H.264 / MJPEG
- Remote Viewing via CMS, Internet Explorer, and iOS & Android Apps
- ONVIF Compliant
- MicroSD Card Slot for Local Recording (256GB)
- IP67 Weather Resistance + IK10 Impact
- Optional Junction Box (VT-TJB03A), Wall Mount (VT-TWMT3) and In-Ceiling Semi Flush Mount (VT-TFMT-S) Available [Other Mounting Options Below]
- 12VDC & PoE (Power over Ethernet) Operation
- 3-Year Warranty

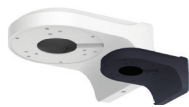
MOUNTS



VT-TJB03A/B
Optional Junction Box for Cable Management



VT-TFMT-S
Optional Semi-Flush Mount



VT-TWMT3/B
Optional Wall Mount



VT-TPLMT
Universal Pole Mount Adapter
Ivory, reqs. VT-TJB03A



VT-TCNMT
Universal Corner Mount Adapter Ivory, reqs. VT-TJB03A

RECORDERS



Pair with VITEK Transcendent Series Network Recorders VT-TNR818PF, VT-TNR1646PF, and VT-TNR3216PF with Built-in PoE and Advanced Analytics including Face Detection.

SPECIFICATIONS

Image Sensor	1/3" 4.0 Megapixel Progressive Scan CMOS
Image Size	4 MegaPixel (2592 × 1520)
Resolution	4 MP (2592 × 1520) / 3 MP (2304 × 1296) / 1080P (1920 × 1080) / 720P (1280 × 720) / D1/CIF (480 × 240)
Min. Illumination	0 Lux (IR LED ON)
Lens	2.8mm or 3.6mm Fixed Iris Lens Options
Day/Night	True Day/Night by ICR
IR LEDs	1 Matrix Style IR LED
IR Distance	Up to 100'
Video Compression	Smart H.265 / H.265+ / H.265 / Smart H.264 / H.264+ / H.264 / MJPEG
Audio Compression	G.711A / G.711U
Main-Stream	4 MP, 2K, 3MP, 1080P, 720P (60Hz: 1 ~ 30fps; 50Hz: 1 ~ 25fps) HFR mode: 1080P / 720P (60Hz: 1 ~ 60fps; 50Hz: 1 ~ 50fps)
Bit Rate	64 Kbps ~ 8 Mbps
Wide Dynamic Range (WDR)	120dB Super WDR
Digital Noise Reduction (DNR)	3D-DNR
Quality	VBR (Five Levels of Adjustment) / CBR (Adjustable)
Image Setting	ROI, Saturation, Brightness, Chroma, Contrast, Sharpen, NR; adjustable through client software or web browser
Gen. III Advanced Analytics	Abnormal Video, Face Detection, Regional Intrusion, Regional Entrance / Exiting, Line Crossing, Target Counting
Smart Alarm	Motion detection, SD card error, SD card full
Region of Interest (ROI)	Each ROI to be configured separately
Audio	1 Ch. Audio In + Built in Mic*
Alarm	1 Ch. Alarm In + Out
Local Storage	Built-in micro SD card slot up to 256GB
RS485	× 1
Remote Viewing	CMS / Web Browser / Mobile (iOS/Android)
Supported Browsers	Internet Explorer, Chrome and Firefox with IE Tab
Connection Protocol	ONVIF
Resistance	IP67 + IK10
Power Input	12VDC / PoE
Power Consumpt. (12VDC)	120mA (LEDs Off) / 480mA (LEDs On)
Power Consumpt. (PoE)	< 7W
Working Environment	-22° ~ 140° / < 95% Humidity
Weight	1.31 lbs. / 593g
Dimensions	4.57" × 3.58" (116mm × 91mm) Dia × H

*Please research local, state and federal laws regarding the implementation of audio surveillance.

