

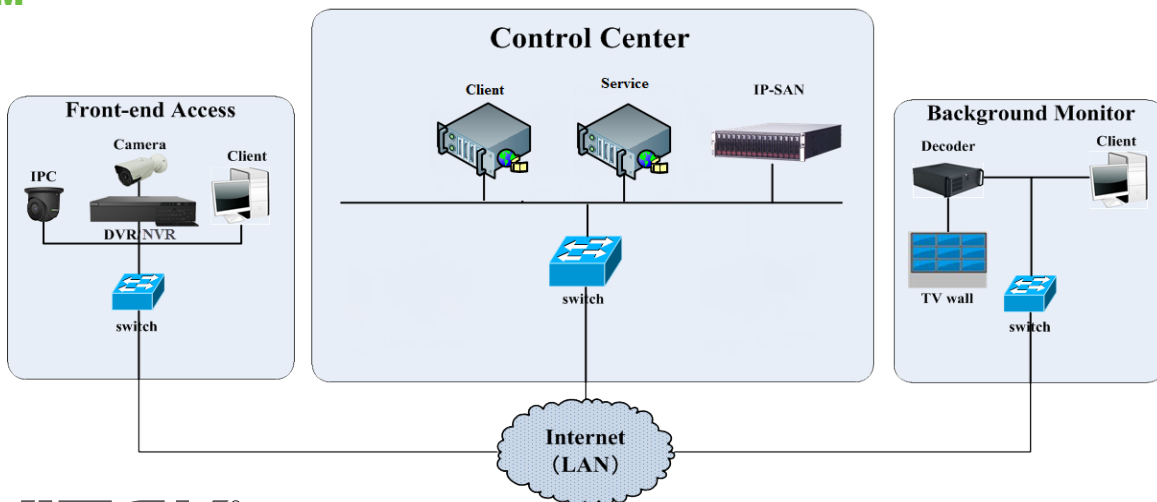


The VITEK VT-SVRM10-C is a configuration / base management server designed specifically to support security and surveillance applications. This unit (VT-SVRM10-C) functions as the base / configuration server and works with the VT-SVRM10-S (Transfer Server for satellite media). Pre-installed software on the device combines video stream replication and distribution. These units easily meet the requirements of medium and large sized video surveillance systems, delivering powerful performance, flexible expansion and compatibility, a user-friendly interface, and affordability. These units work without installing additional HDDs.

## FEATURES

- Stable and Reliable X86 Hardware Platform
- Simple Deployment with Pre-set Software
- Supports access by devices manufactured by Vitek and other leading CCTV manufacturers
- Supports ONVIF Protocol, and Device Auto-Report
- Add Devices via IP Address, IP Address Segment, Domain Name and Serial Number
- Automatically Search Devices and Quickly Add
- View with Standard, Wide, and Customized Screen Modes
- Features Instant Playback, Alarm Preview, Corridor and Fisheye (360) Modes, PTZ Direction and Focus Control with Presets, Voice Monitoring, Two-Way Talk and Broadcast
- Record Search, Playback and Downloading from Devices and Control Center, or by Time, Channel, Event and Tag
- Time Slice Playback, Record Clip and Backup by Time / Event
- Perform Video Search, Playback and Downloading from IPC SD Card(s)
- Supports Multi-Level Images and Online E-Map
- Supports TV Wall Management, Including Splicing, PIP, Roaming and Video Triggering, as well as Auto-Switch Planning and Camera Groups on TV Walls
- Supports Several Alarm Types and Linkages
- Multi-Level, Multi-Area, and Multi-User Permission Management, as well as Log Management, Including Notices and Alarms for Devices' On and Offline Status
- Supports Client Overload Protection
- SDK/OCX Available for Secondary Development
- Supports DB31 / T 889-2015 and Db33 / T 629-2011 Protocols
- Supports Alarm Host, Access Control System / Attendance System, Dynamic Environment Surveillance System, and One-Button Alarm System Access

## SYSTEM



VT-SVRM10-C Detailed Specifications	
CPU	Intel Xeon Processor E3-1225V5 4C/4T 3.3GHz 8M HD Graphics P530/80W
OS	Windows Server 2008 / Linux
Memory	8GB DDR4 ECC up to 64GB
Network Card	Dual Gigabit Ports I350-T2 + Intel 210-AT Dual Gigabit Ethernet Server Cards
HDD	1 built-in Kingston SSD/120G/SATA/6Gb/s/2.5inch/SUV400S37; 3.5/2.5 inch HDD slots × 3
PCI Expansion	1*PCI-E3.0*8; 1*PCI-E3.0*8 (X4); 1*PCI-E3.0*16 (X8)
Management	BMC Module; Support IPMI2.0, 1 10/100 Mbps RJ45 Management Port, KVM, Supporting Remote Management
Interfaces	VGA×1, HDMI×1, USB×6 (Front Panel: USB 2.0×2, Rear USB 3.0×4), Network Interface×4, CO×1, Remote Mgmt Port×1, Audio In/Output×2
Max. Camera Access	2048 CH., Expandable to 10,000 with VT-SVRM10-S
Max. Device Access	500 Devices
Max. Device Access of Single Transfer Service	300 NVRs or 500 IPCs.
Max. Decoding Capability	6 CH. 8MP / 11 CH. 5MP / 13 CH. 4MP / 21 CH. 1080P / 30 CH. 720P / 34 CH. D1 / 36 CH. CIF(or lower)
Max. Transfer Server Access	32 Transfer Servers
Device Group	Yes
Max. Number of Users	Max. 64 Users (Expandable to 1024 Users with Authorization)
Simultaneous Online Users	64 Users
User Permission	Self-Defined
Real-Time View	Up to 100 CH Real-Time Preview; Supports Auto Switch
PTZ	Supports PTZ Control, PTZ Permission, PTZ Lock, PTZ Preset Management
Storage Type	IP SAN / Streaming Media Storage
Record Type	Schedule, Manual and Alarm Records
Record Search	Multi-Channel Synchronous Search and Playback
Incoming Bandwidth	640Mbps
Output Bandwidth	640Mbps (Live View & Transfer)
Power	100~240V-6~3A/50~60Hz
Power Consumption	≤300 with HDD
Working Environment	Working: 50°F ~ 95°F (10°C ~ 35°C); Standby: -40°F ~ +158°F (-40°C ~ +70°C) (Ambient)
Relative Humidity	Standby: 95% 77°F ~ 86°C (25°C ~ 30°C) (non-condensing)
Noise	Working: <50dBA; 6.2BA (<82°F)
Gross Weight	Approx. 26.45lb (12KG)
Dimensions: Inches (mm)	16.93" × 19.17" × 1.73" (430mm x 487mm x 44mm) (W x D x H)
Installation	Standard 19-Inch Rack Mount

## DIMENSIONS

