

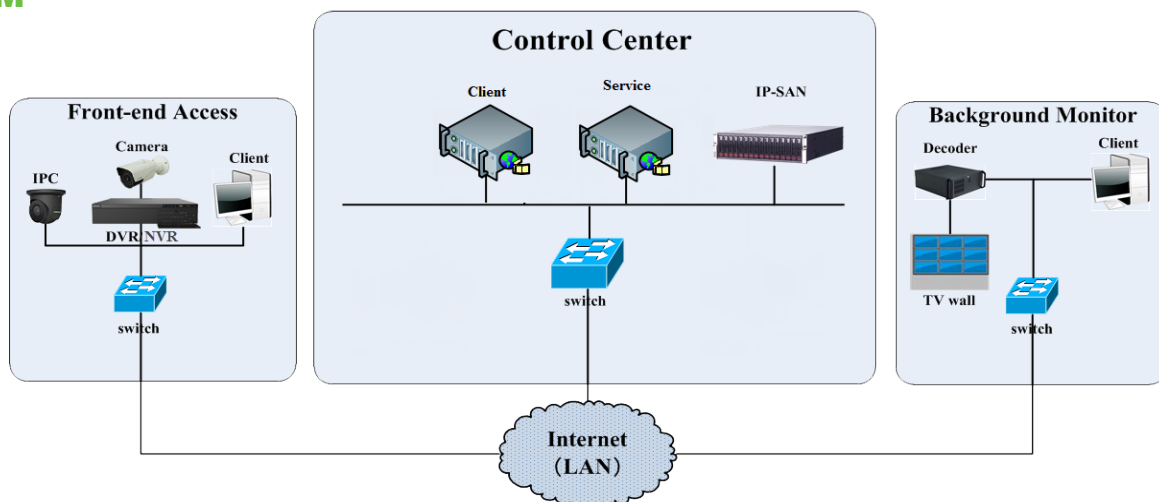


The VITEK VT-SVRM10-S is a satellite media transfer server designed specifically to support security and surveillance applications. This unit (VT-SVRM10-S) works with the VT-SVRM10-C (Base / Configuration server). Pre-installed software on the device combines video stream replication and distribution. These units easily meet the requirements of large and medium sized video surveillance systems, delivering powerful performance, flexible expansion and compatibility, a user-friendly interface, and affordability. These units work without installing additional HDDs.

## FEATURES

- 600MBPS stream access and transfer per device
- 4 Gigabit Ethernet Ports, with Powerful Network Redundancy Capabilities
- Stable and Reliable X86 Hardware Platform
- Simple Deployment with Pre-set Software
- Supports access by devices manufactured by Vitek and other leading CCTV manufacturers
- Supports ONVIF Protocol, and Device Auto-Report
- Add Devices via IP Address, IP Address Segment, Domain Name and Serial Number
- Quickly Add and Automatically Search Devices
- View with Standard, Wide, and Customized Screen Modes

## SYSTEM



# Preliminary Specs: VT-SVRM10-S

High Performance Satellite Media Transfer Server  
for Video Surveillance Applications

| VT-SVRM10-S Detailed Specifications |  |
|-------------------------------------|--|
| CPU                                 | Intel Xeon Processor E3-1225V5 4C/4T 3.3GHz 8M HD Graphics P530/80W  |
| OS                                  | Cent OS7.3   |
| Memory                              | 8GB DDR4 ECC up to 64GB  |
| Network Card                        | Dual Gigabit Ports I350-T2 + Intel 210-AT Dual Gigabit Ethernet Server Cards   |
| HDD                                 | 1 built-in Kingston SSD/120G/SATA/6Gb/s/2.5inch/SUV400S37; 3.5/2.5 inch HDD slots × 3  |
| PCI Expansion                       | 1*PCI-E3.0*8; 1*PCI-E3.0*8 (X4); 1*PCI-E3.0*16 (X8)  |
| Management                          | BMC Module; Support IPMI2.0, 1 10/100 Mbps RJ45 Management Port, KVM, Supporting Remote Management                                 |
| Interfaces                          | VGA×1, USB×6 (Front Panel: USB 2.0×2, Rear USB 2.0×2, USB 3.0×2), Network Interface×4, CO×1, Remote Mgmt Port×1; Audio In/Output×2 |
| Access Bandwidth                    | 600Mbps  |
| Output Bandwidth                    | 600Mbps (Live View & Transfer)   |
| Power                               | 100~240V-6~3A/50~60Hz  |
| Power Consumption                   | ≤300 with HDD  |
| Working Environment                 | Working: 50°F ~ 95°F (10°C ~ 35°C); Standby: -40°F~+158°F (-40°C ~+70°C) (Ambient)   |
| Relative Humidity                   | Standby: 95% 77°F ~ 86°C (25°C ~ 30°C) (non-condensing)  |
| Noise                               | Working: <50dBA; 6.2BA (<82°F)   |
| Gross Weight                        | Approx. 26.45lb (12KG)   |
| Dimensions: Inches (mm)             | 16.93" × 19.17" × 1.73" (430mm x 1487mm x 44mm) (W x D x H)  |
| Installation                        | Standard 19-Inch Rack Mount  |

## DIMENSIONS

